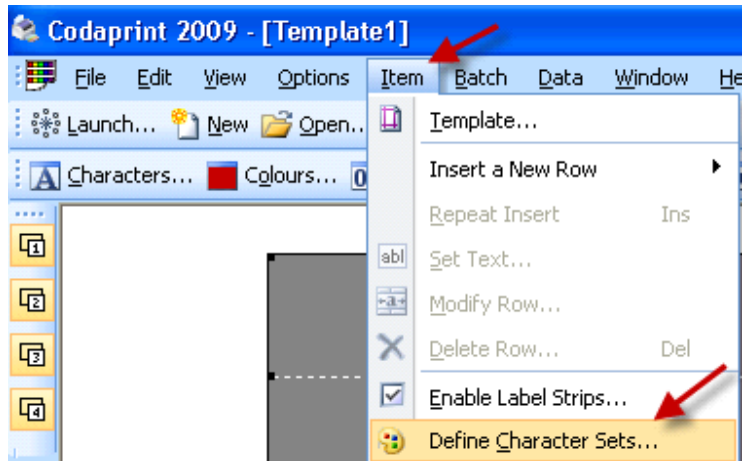


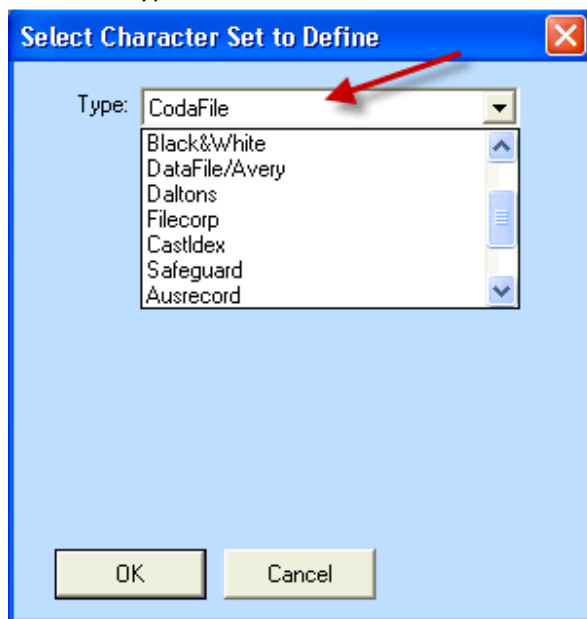
How to Define Character Sets in Codaprint

Load Codaprint Template

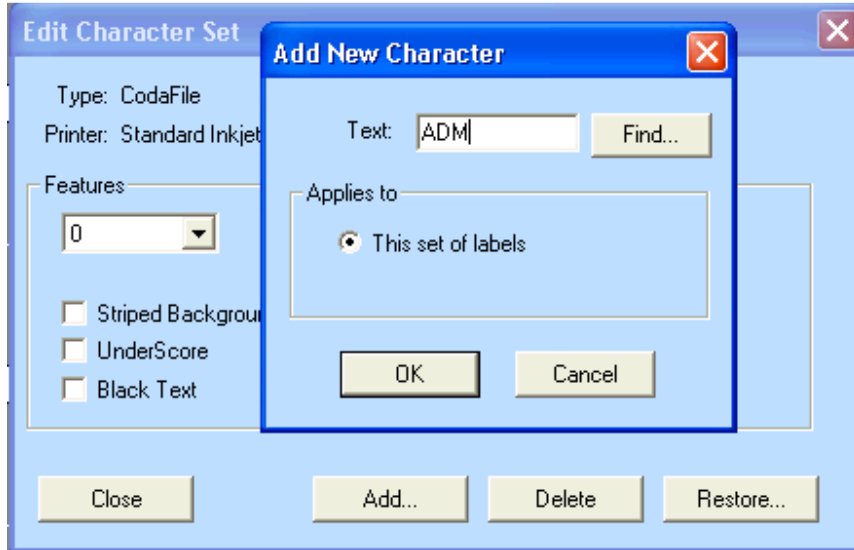
- Click on Item > Define Character Sets



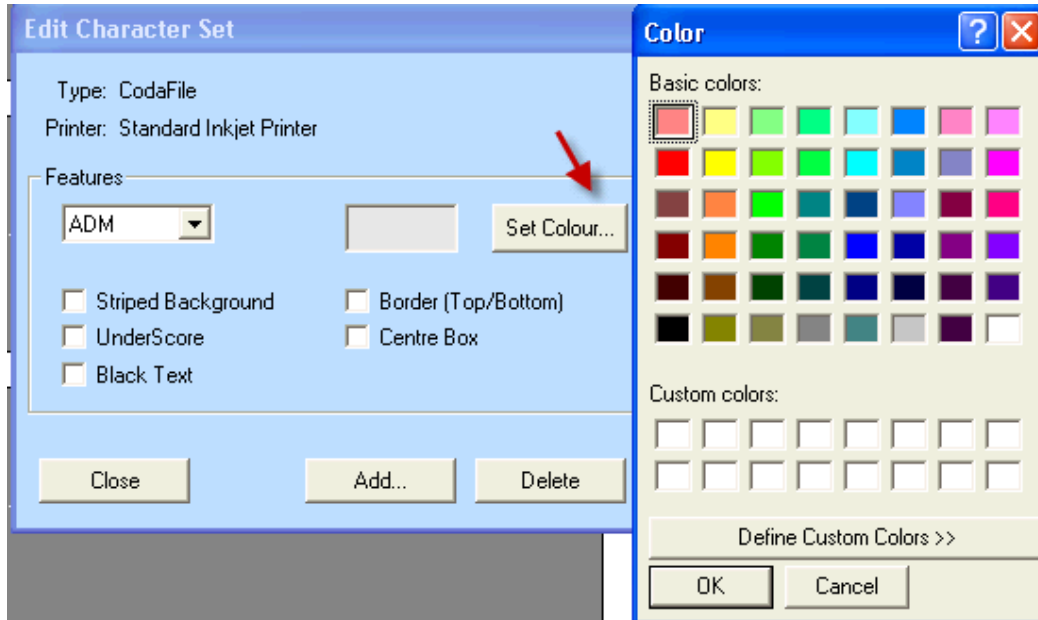
- Select the Type



- Click on Add > Type in the new Character Set into the Text Field



- Set the Colour and any other Settings



- Once the character is customized > Click on Close and Yes to Save changes



- To check if the Character has been added, selected Characters button selected the Type where the character has been added to click on OK, in the “Set Character Text” click on Find and see if the character set has been added to the list

